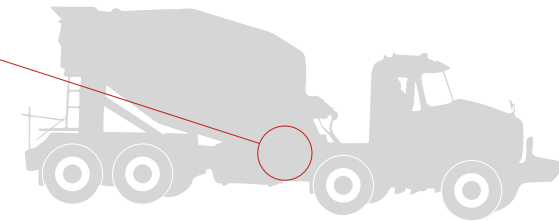
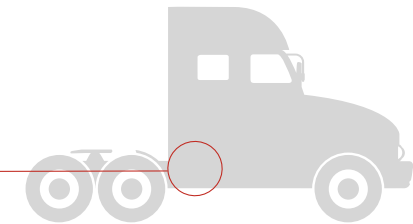
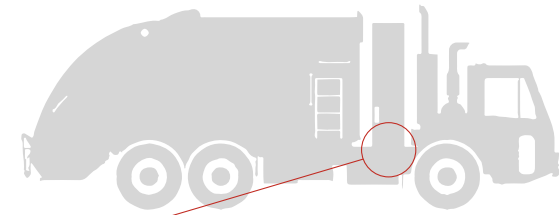


FUEL MANAGEMENT MODULE.



**CLEAN FUEL
TECHNOLOGIES™**



FUEL MANAGEMENT MODULE

Cummins Clean Fuel Technologies, known as the industry's first complete CNG fuel system solution, is also your source for a best-in-class fuel management module. The Fuel Management Module (FMM) is designed for performance and serviceability for use with medium- and heavy-duty engines. It is optimized to operate in the most extreme environmental conditions while maintaining high flow across the full operating range of CNG vehicles and engines.

Drop-in replacement. Our Fuel Management Module is designed as a drop-in replacement for many FMMs on the market including Agility, Mainstay, Heil, and McNeilus*. Available for immediate shipment, our product features custom bolt-on-brackets to match most existing bolt holes.

Superior flow characteristics. Compared to other manufacturers, the Cummins Clean Fuel Technologies Fuel Management Module offers superior flow characteristics. Our product is equipped with a piston-style single-stage regulator, integrated heat exchanger and proprietary poppet technology. And our regulator has been proven reliable since 2014 through on-road validation over millions of miles and cycles.

Warranty: 12-month limited warranty.

FRONT INTERFACE PANEL

- NGV1 and transit fill receptacles
- Defuel receptacle with 3-way ball valve
- Manual emergency shut-off – ¼ turn ball valve
- High and low pressure gauges
- Proximity switch – starter interrupt lock-off
- SS high pressure purge valve
- Heavy-duty stainless hinge, with flush-mounted latch

REAR PANEL

- (2) HP ½" SS connections – to cylinders (standard with compression connections)
- HP 3/8" SS connection – to remote fill (standard with compression connection)
- LP 5/8" connection – to engine (standard with JIC connection)
- (2) Coolant connections ½" beaded hose barb
- Plug and play electrical harness

CORE COMPONENTS

- Temperature/pressure transducer
- TXL wire with woven loom – labeled for identification
- CSA Certified: Parker FM-80 HP Regulator – piston style regulator, with integrated 5cc coalescent filter and solenoid lock-off – 125 PSI outlet
- Proprietary anodized aluminum manifold system with integrated high flow check valve
- 3/8" SS O-ring Face Seal (ORFS) HP CNC Bent Lines – HP lines are coated yellow for identification

FILTER ACCESS DOOR

- Easy access maintenance door, with constant tension latch, and heavy duty SS hinge
- Access to 5cc HP coalescing filter with drain plug

CUSTOM HIGH-PRESSURE COMPONENTS AVAILABLE UPON REQUEST:

- Front bumper NGV1 fill kit, with kill cap
- Auxiliary NGV1 fill kit, with kill cap and door
- GreenLync 2.0
- Digital in-cab PSI fuel gauge with harness
- 35' De-fuel hose assembly
- Digital or analog fuel gauge with harness upgradeable to GreenLync 2.0

TECH TIP

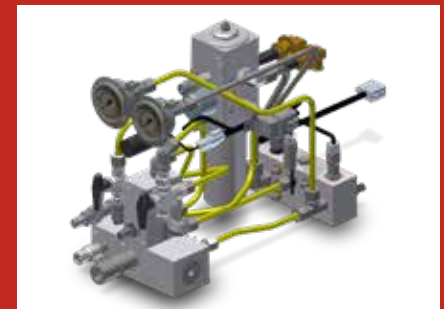
It is recommended to drain the filter housing every 4000 miles (80 hours) or as necessary. It is also recommended to replace the filter every 12,000 miles (240 hours). Maintenance intervals are dependent on gas quality, system and driving conditions.



FRONT INTERFACE PANEL



REAR PANEL



CORE COMPONENTS



FILTER ACCESS DOOR



cumminscleantech.com

Bulletin 6416762 Produced in U.S.A. 09/22
©Natural Gas Fuel Systems, LLC
0873-0722 CFT Cummins Clean Fuel Technologies Fuel Management Module brochure

**FOR
A WORLD
THAT'S
ALWAYS ON™**